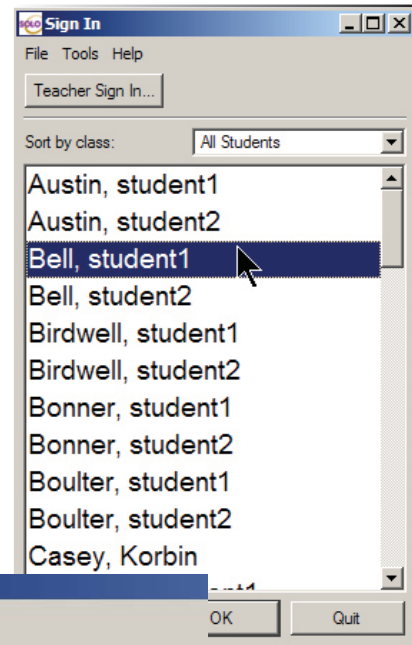
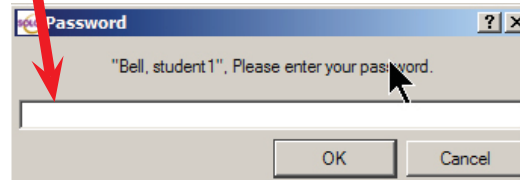


Solo Network Version Outline

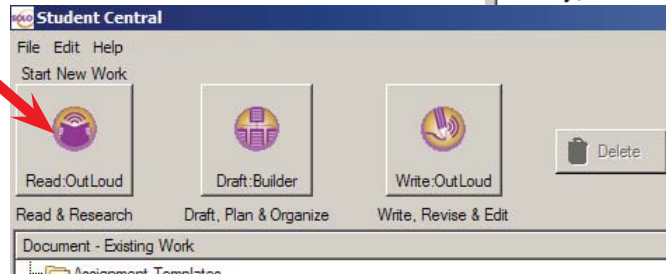
I. Basic Solo Features

1. Student login

- a. Student clicks their name
- b. Type in Password (tisd)

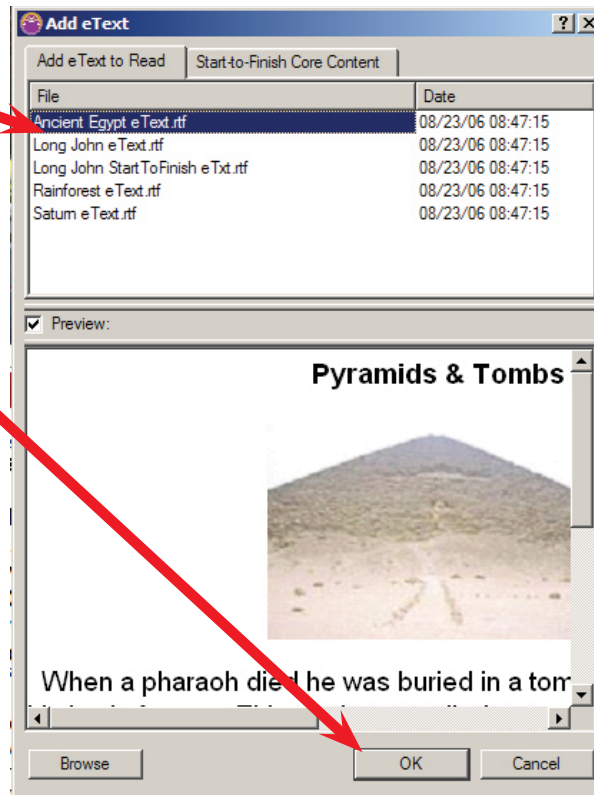


2. Click Read OutLoud



3. Click on the name of the book you wish to read.

4. Click OK



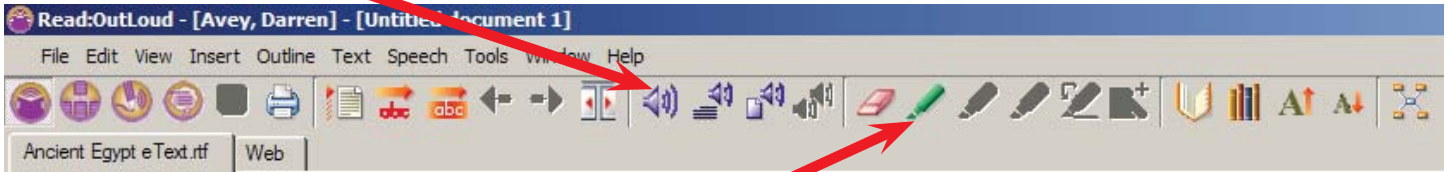
II. Reading Features

1. Reading Text

a. Click in front of word or sentence you wish to start reading.

b. click Speak tool on toolbar.

When a pharaoh died he was body forever. This tomb was c was that if a pharaoh's body w nowhere to go and would die.



2. Highlight Text to take notes.